

ES:GCP/RAS/184/JPN
Field document

FAO/GOVERNMENT COOPERATIVE PROGRAMME



**STRENGTHENING REGIONAL DATA EXCHANGE SYSTEM ON FOOD
AND AGRICULTURAL STATISTICS IN ASIA AND THE PACIFIC
COUNTRIES
(GCP/RAS/184/JPN)**

**USERS MANUAL FOR
REGIONAL DATA EXCHANGE SYSTEM (RDES)
WITH CountrySTAT**

by

Elmer Dante
IT Consultant

FOOD AND AGRICULTURE ORGANIZATION OF THE UNITED NATIONS

Bangkok, Thailand, April 2007

TABLE OF CONTENTS

FOOD AND AGRICULTURE ORGANIZATION OF THE UNITED NATIONS...1	
Bangkok, Thailand, April 2007	1
I. About this Guide	3
II. Abbreviation/Definition	3
III. Introduction.....	4
Background.....	4
About RDES website.....	4
The RDES Database with CountrySTAT	5
IV. Getting Started.....	6
The RDES CountrySTAT Homepage	6
NAVIGATION	6
Top Bar Menu description	7
Left Navigation Menu description.....	8
Links	9
Search Function	9
How to view country data statistics?	9
Options on the table screen.....	13
Sample statistics output in graphical form.....	14
Sample statistics output in geographical representation (Map).....	14
Map options:	15
Searching keyword(s) within RDES CountrySTAT website	16
Bulk Download.....	17
Selected Indicator in APCAS	18
V. Quick guide.....	20
VI. Quick guide - CD-ROM version	22

I. About this Guide

This Guide provides instructions on how to use and navigate through the Regional Data Exchange System (RDES) website and describes its features and functions. It assumes that users have basic skills in computer and are familiar with Internet browsers, i.e., Microsoft Internet Explorer or Mozilla Firefox.

The introductory part of the Guide provides information about the main website of FAO RDES and the RDES itself.

II. Abbreviation/Definition

.csv	- Comma Separated Value File Format (comma delimited)
.dbf	- Database file extension. Can be viewed with common database software such as FoxPro, ACT Database, Oracle, Excel and others
.px	- PC-Axis file format
.wk1	- Spreadsheet file format created by Lotus. Can be viewed using Lotus 123 and Microsoft Excel.
.xls	- Excel file format
APCAS	- Asia and Pacific Commission for Agricultural Statistics
CountrySTAT	- An integrated national food and agriculture statistical information system ensuring harmonization of national data and metadata collections for analysis and policy making.
FAO	- Food and Agriculture Organization
Firefox	- An open source internet browser from mozilla.org
IE	- Internet Explorer
Listbox	- Allows the user to select one or more items from a list contained within a static, multiple line text box
RDES	- Regional Data Exchange System
WWW	- World Wide Web

III. Introduction

Background

The regional project “Strengthening Regional Data Exchange System on Food and Agricultural statistics in Asia and Pacific countries” (GCP/RAS/184/JPN) aims at establishing an integrated Regional Data Exchange System (RDES) providing easy access to national agricultural statistics in Asia and the Pacific based on common concepts, standard and classification systems through the Internet. The RDES addresses common concerns for improvement of availability and comparability agricultural statistics in the region; provides relevant data for policymaking and measuring trends in agricultural development; promotes wider data utilization and dissemination to the users through the Internet; enables the evaluation of data quality; fosters cooperation among data providers; and serves as a catalyst for a more rational data management.

The Internet has become a powerful tool for electronic networking and data exchange. Through the web, electronic data can be made available instantaneously to practically anybody in the world who has access to the Internet. The web also allows publication of data in formats that are commonly used in the region, thus facilitating data exchange.

About RDES website

Launched in March 2003, the RDES is an interactive web-based system (Figure 3.1) for uploading, storing and downloading/viewing statistical data files in various formats. Each participating country has its own independent database which records the description and location of the statistical data files. More than 200 time-series crop and livestock production records are now stored into the RDES database. Other than the national aggregate data, RDES database also provides sub-national or provincial level statistics. The RDES is a useful tool for examining national and sub-national agricultural production trends. It contributes to national capacity building and policy analysis through the development of the food and agricultural statistical framework. It enables greater efficiencies by inter-linking and facilitating data exchange between databases in national and regional statistical offices.

REGIONAL DATA EXCHANGE SYSTEM
on Food and Agricultural Statistics in Asia and Pacific countries

FAO RAP Food and Agriculture Organization (FAO) Regional Office for Asia and the Pacific

This system has been developed with financial support with the Government of Japan

RDES with CountrySTAT	ABOUT THE PROJECT
COUNTRY PAGES	
<i>Participating Countries</i>	<p>The regional project Strengthening Regional Data Exchange System on Food and Agricultural Statistics in Asia and Pacific Countries (GCP/RAS/184/JPN) was launched in December 2001. It is the follow-up project to "Improvement of Agricultural Statistics in Asia and Pacific Countries (GCP/RAS/171/JPN)". These two projects are funded by the Government of Japan, executed by the Food and Agriculture Organization of the United Nations (FAO).</p> <p>The development objective of the member countries of Asia and the Pacific Commission on Agricultural Statistics (APCAS) is to have a sound statistical system capable of (i) providing data and information for planning and policy making in the food and agriculture sector with the aim of raising living standard and nutritional status of people, especially the rural poor, and (ii) exchanging these data with other countries to support national, regional and global food security programmes and policies.</p> <p>The Project has two immediate objectives; 1) Phased implementation of the Master Plan for the Regional Data Exchange System for Food and Agricultural Statistics, according to concepts formulated by the previous regional project with respect to the transfer of data in electronic format among participating countries in the Region and FAO; and 2) Strengthening of national capacity to analyze, use and disseminate food and agricultural statistics in support of national agricultural development policy and planning, including food security and poverty alleviation.</p> <p>To achieve the objectives, the project has developed the Regional Data Exchange System which is a web-based facility for storing and exchanging agricultural sector statistics.</p> <p>INSTRUCTION: Select a country on the left-side menu to access country-based facilities for accessing statistics data files.</p> <p>1. Guideline of the Regional Data Exchange System 2. Guideline of the standardization of the Regional Data Exchange System</p>
Bangladesh	
Bhutan	
Cambodia	
China	
Fiji	
India	
Indonesia	
Iran	
Lao PDR	
Myanmar	
Nepal	
Pakistan	
Philippines	
Sri Lanka	
Thailand	
Viet Nam	
Japan (Donor)	
<i>Other APCAS Countries</i>	
Australia	
Rep. of Korea	
Malaysia	
USA	
FAORAP Publications	<p>PROJECT DOCUMENTS</p> <p>Strengthening Regional Data Exchange System on Food and Agricultural Statistics in Asia and Pacific Countries (GCP/RAS/184/JPN)</p> <ul style="list-style-type: none"> ◆ Proceedings of the First Focal Point Meeting, Bangkok, Thailand, 6-7 August 2002 [Download report in PDF format, 147kb] ◆ Report of the Technical Consultation on the Development of the Regional Data Exchange System, Bangkok, Thailand, 8 August 2002 [Download report in PDF format, 463kb]
"Selected Indicators of	

Figure 3.1 - RDES Homepage

The RDES Database with CountrySTAT

CountrySTAT is a statistical information system developed by the Statistics Department of FAO (see detailed information about CountrySTAT at http://www.fao.org/faostat/countrystat_en.asp). RDES has developed a website on statistical information using CountrySTAT framework as a core

system of the database. Users can select a country database, search for statistics using the search function or do a query by selecting subject area then viewing the result in tabular, graphical or geographical forms. In addition, users can also download country statistics in PX file, Excel and CSV formats for off-line viewing. PC-Axis is required to view .px files. You may download the PC-Axis software at <http://www.pc-axis.scb.se/>.

IV. Getting Started

The RDES CountrySTAT Homepage

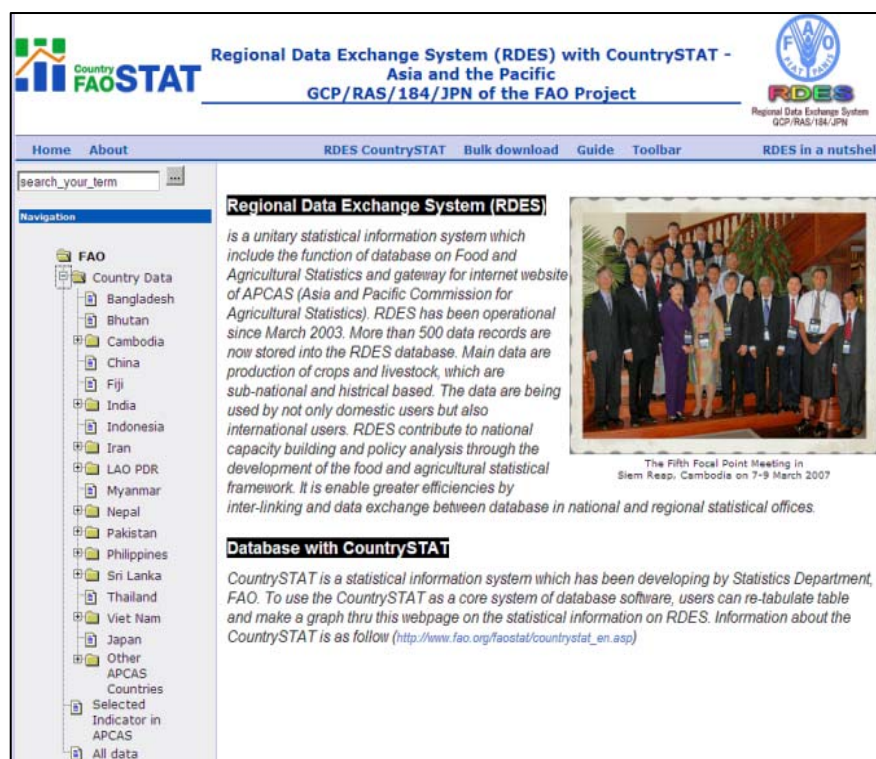


Fig 4.1 – RDES CountrySTAT Homepage

NAVIGATION

Users of the RDES CountrySTAT can access the site through: (1) **Top Bar Menu**, (2) **Left Navigation Menu** and (3) **Links**. These were designed to make it as easy as possible for users to get around and get where he/she wants to go quickly. NOTE: From any page of the site, users can click on the FAO CountrySTAT Logo or RDES logo to go directly to the RDES Homepage (http://www.fao.org/faostat/countrystat_en.asp).



CountrySTAT Logo
RDES Logo



1. **Top Bar Menu** - located at the upper side of the every page except on the country statistical data query result pages.
2. **Left Navigation Menu**- located on the right side of every page except on the country statistical data query result pages.
3. **Links** – located on the right- bottom side of every page except on the query result pages.

Top Bar Menu description



Figure 4.2 – Top menu

Link name	Description
Home	link to RDES Homepage (http://www.fao.org/faostat/countrystat_en.asp)
About	link to FAO CountrySTAT Homepage (http://www.fao.org/faostat/countrystat_en.asp)
RDES CountrySTAT	link to homepage of RDES CountrySTAT
Bulk Download	link to download country data in .xls and .px format. Also available for download is selected indicator in .px format
Guide	opens CountrySTAT PowerPoint presentation using CountrySTAT Kenya as an example.
Toolbar	link to CountrySTAT download page toolbar for Firefox and Internet Explorer
RDES in a nutshell	link to download list of participating countries and their respective profiles in pdf file

Left Navigation Menu description

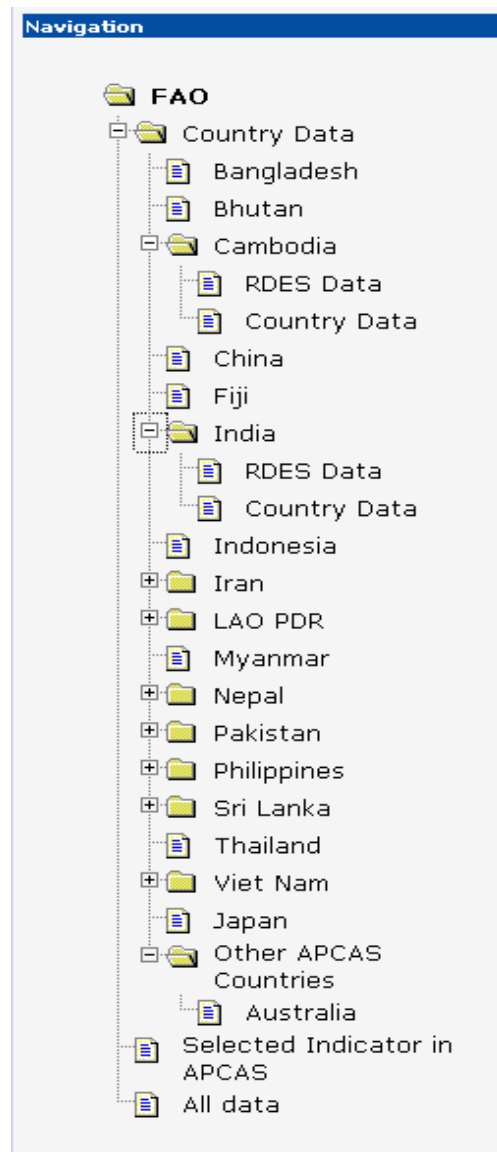


Figure 4.4 – Left Navigation Menu

On the left navigation menu, users can select any country data, selected indicator in APCAS or all available statistical data.



this folder icon indicates opened collapsible/expandable menu.

- sign means currently open or active folder.
- + sign means currently close or inactive folder.

Link name	Description
Country Data	opens list of links to country data in expandable/collapsible manner.
Selected Indicator in APCAS	opens list of selected indicator in APCAS page
All Data	opens list of all available data in RDES CountrySTAT website

Links

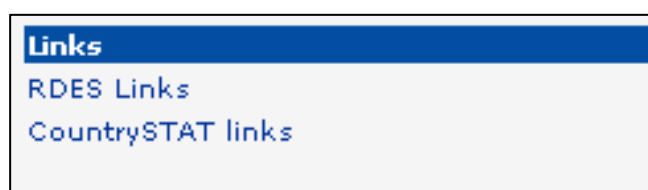


Figure 4.5 - Links

Link name	Description
RDES Links	opens list of sources both internal (pages within RDES website) and external web links related to RDES and CountrySTAT
CountrySTAT Links	Opens list of sources related to CountrySTAT

Search Function

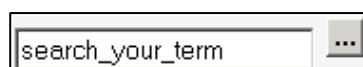


Figure 4.3 – Search text box

Search function allows users to type in keywords, such as "rice" or "Rice in Philippines" and retrieve the page(s) containing that keywords.

How to view country data statistics?

To download or view the country data statistics, follow the steps below:

1. On the left navigation menu, click the plus sign (+) on the left side of Country Data folder (see figure 4.6 below) to expand the folder and see the list of names of participating countries.

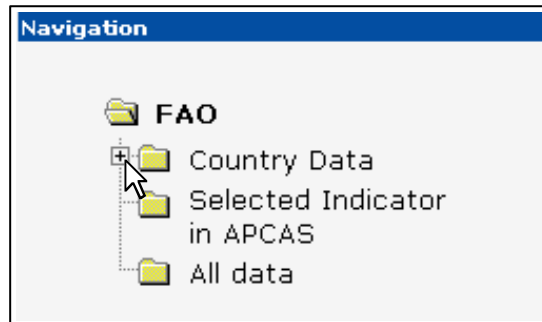


Figure 4.6 – Secondary Navigation

2. Click on the country name, for example “Bhutan”. You will see the links to available data of Bhutan such as rice paddy, wheat, maize, cereals and others.
3. To view rice paddy statistics in Bhutan, click the text ***B01 Rice Paddy (Bhutan) (BH-B01RicePaddy)***. This will open a new page. See Figure 4.7.

*Within a subject area, in this case Rice Paddy Bhutan, users can query by **Elements, Province and Year** by selecting desired values displayed in the list boxes.*

Elements <input checked="" type="checkbox"/> <input type="checkbox"/>	Province <input checked="" type="checkbox"/> <input type="checkbox"/>	Year <input checked="" type="checkbox"/> <input type="checkbox"/>
Total: 3. Selected: <input type="text" value="1"/>	Total: 21. Selected: <input type="text" value="21"/>	Total: 5. Selected: <input type="text" value="5"/>
Production Yield Harvested Area	Thimphu Trashigang Trongsa Tsirang Wangdue Zhemgang	1999 2000 2002 2003 2004
Search <input type="text"/> <input type="button" value="▶"/> <input type="checkbox"/> Text start	Search <input type="text"/> <input type="button" value="▶"/> <input type="checkbox"/> Text start	Search <input type="text"/> <input type="button" value="▶"/> <input type="checkbox"/> Text start
For variables marked <input checked="" type="checkbox"/> you need to select at least one value Select an option and press <input type="button" value="Continue"/>		
The table contains a total of 315 data cells (63 rows and 5 columns) <input type="checkbox"/> Download total. Presentation on screen is limited to 2000 rows and 50 columns. Number of selected data rows <input type="text" value="21"/> Number of selected data columns <input type="text" value="5"/>		
<input type="button" value="Table on screen, layout 1"/>		

Figure 4.7 – Data Query

- ✓ This button will select all values under its listbox.
 - This button will deselect all values under its listbox.
4. To get the data, select values in each listbox. To select more than one values in each listbox, press “Ctrl” key then click the values. Please note that you must select at least one value in each listbox.

The user decides if the table shall be displayed on screen or if directly shall be downloaded in some certain file format, like Excel or PX file format.

5. To view the result on screen in tabular form, click “Table on screen, layout1” on the result display format. See figure 4.8.

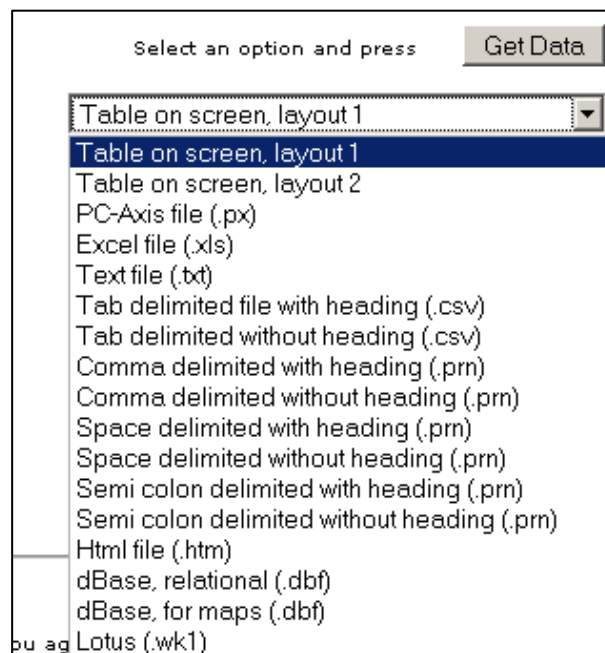



Figure 4.8 – Result display format selection

6. After the selection, click  button to view the result. See figure 4.9

► Table - Select part

Edit and calculate Save As

Rice Paddy by Elements, Province and Year

	1999	2000	2002	2003	2004
Production					
National Total	45 212	68 311	37 827	44 902	54 326
Bumthang	32	80	48	31	11
Chhukha	1 482	2 166	1 169	1 765	1 507
Dagana	3 141	3 663	1 660	2 154	2 967
Gasa	267	92	197	216	117
Ha	231	323	40	151	138
Lhuentse	1 738	2 918	1 443	1 802	1 405
Mongar	1 430	1 445	1 648	1 396	1 500
Paro	4 877	4 671	3 895	3 861	4 876
Pemagatshel	64	71	69	35	140
Punakha	6 019	8 740	4 966	5 396	6 906
SamdrupJongkhar	1 827	3 043	1 728	1 582	1 385
Samtse	3 351	8 265	2 187	4 772	6 640
Sarpang	3 738	9 382	3 536	4 676	9 762
Thimphu	2 587	2 963	2 168	1 904	1 965
Trashi Yangtse	1 897	2 552	1 411	2 017	1 257
Trashigang	3 003	3 617	3 684	3 224	3 913
Trongsa	1 331	1 850	1 349	1 436	1 487
Tsirang	2 450	4 909	1 876	3 331	2 511
Wangdue	4 549	5 860	3 951	3 818	4 883
Zhemgang	1 197	1 701	802	1 332	956

Figure 4.9 – Data Statistics Result (Table screen)

Options on the table screen

Edit and calculate

- ◆ Display the table in new layout
- ◆ Remove lines with only zeros in the table cells
- ◆ Change order for the variables, clockwise
- ◆ Change order for the variables, anticlockwise
- ◆ Change order for the variables, in any order you select
- ◆ Sum one of the variables
- ◆ Change text/code presentation. Select if code, text or code+text is to be shown for a specific variable

Save as

- ◆ PC-Axis file
- ◆ Excel file
- ◆ Text file. You get to select line length, page length, margin.
- ◆ Tab delimited file with heading.
- ◆ Tab delimited file without heading.
- ◆ Comma delimited file with heading.
- ◆ Comma delimited file without heading.
- ◆ Space delimited file with heading.
- ◆ Space delimited file without heading.
- ◆ Semi colon delimited file with heading.
- ◆ Semi colon delimited file without heading.
- ◆ dBase relational table
- ◆ dBase, for maps
- ◆ Lotus

Graphs and Maps

- ◆ Graphs
- ◆ Maps, only shown if the table has a geographical variable



Footnotes for the table



Reference, source, units, etc for the table



Detailed information for tables. The button is only visible when such information is available.



Table shown in a printer friendly version.



The page you are now reading

Sample statistics output in graphical form

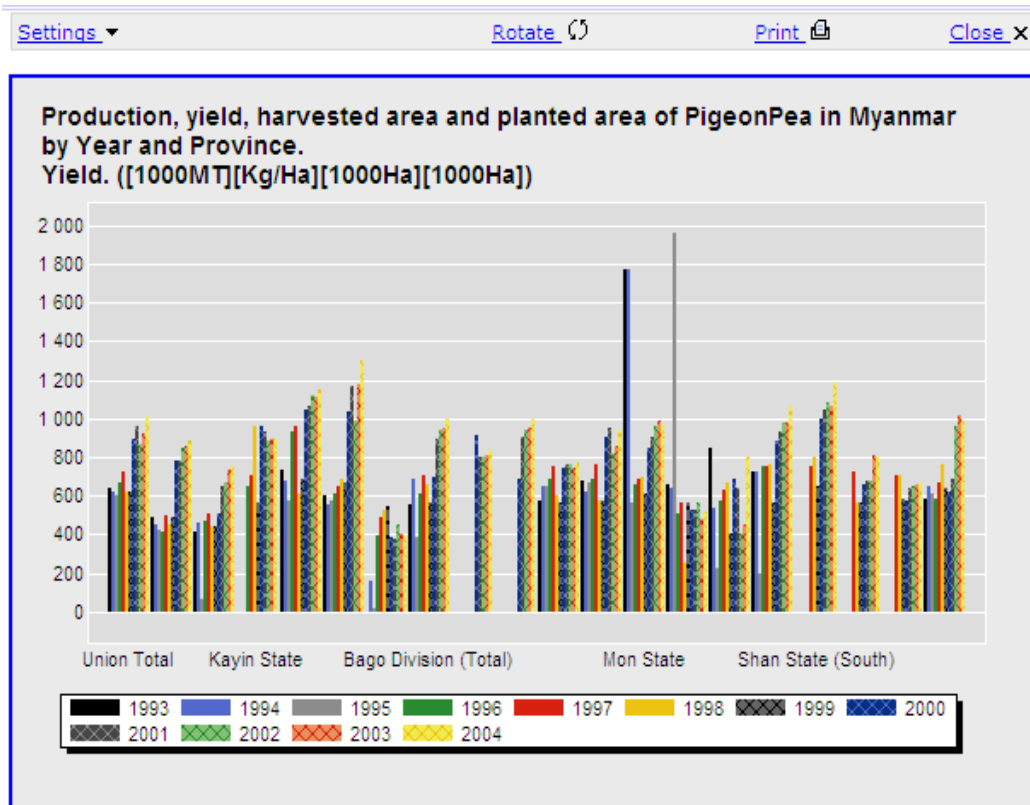


Figure 4.10

Sample statistics output in geographical representation (Map)

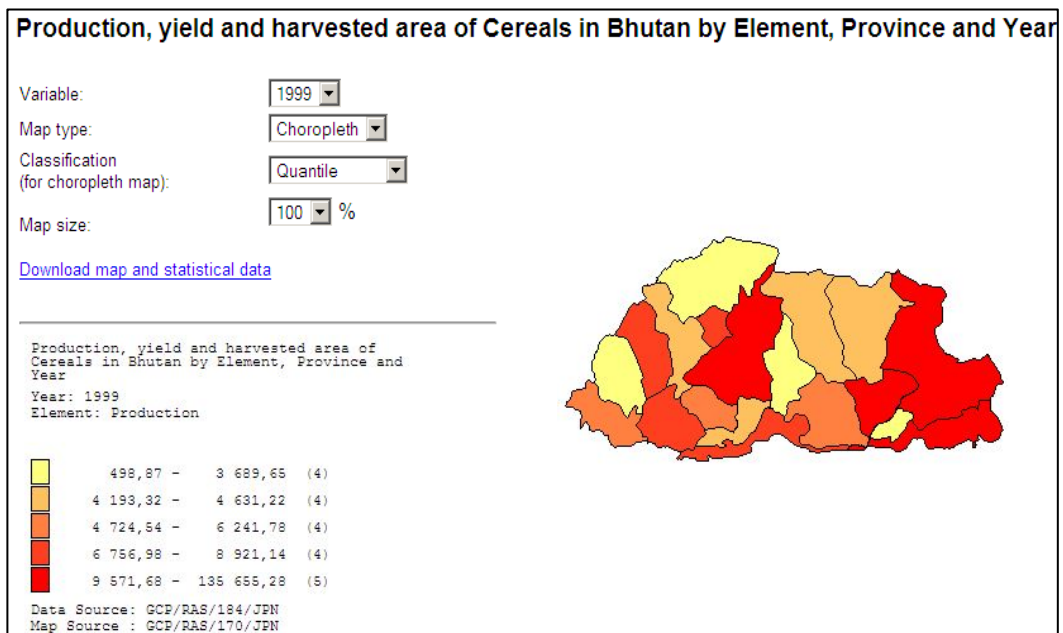


Figure 4.11

Map options:

Option name	Description
Variable	users have the option to select data by year
Map type	Choropleth is the default map type.
Classification	classifies the map either Quatile or Equal interval. <i>Note: this applies only for choropleth map.</i>
Map size	users can change the size of the map
Download map and statistical data	this page will allow the users to download the map image and statistical data in pxo and px file format. User's can open PXO file using PX-Map. Installation file of PX-Map software can be downloaded at http://www.ssb.no/en/software/pxmap/ .

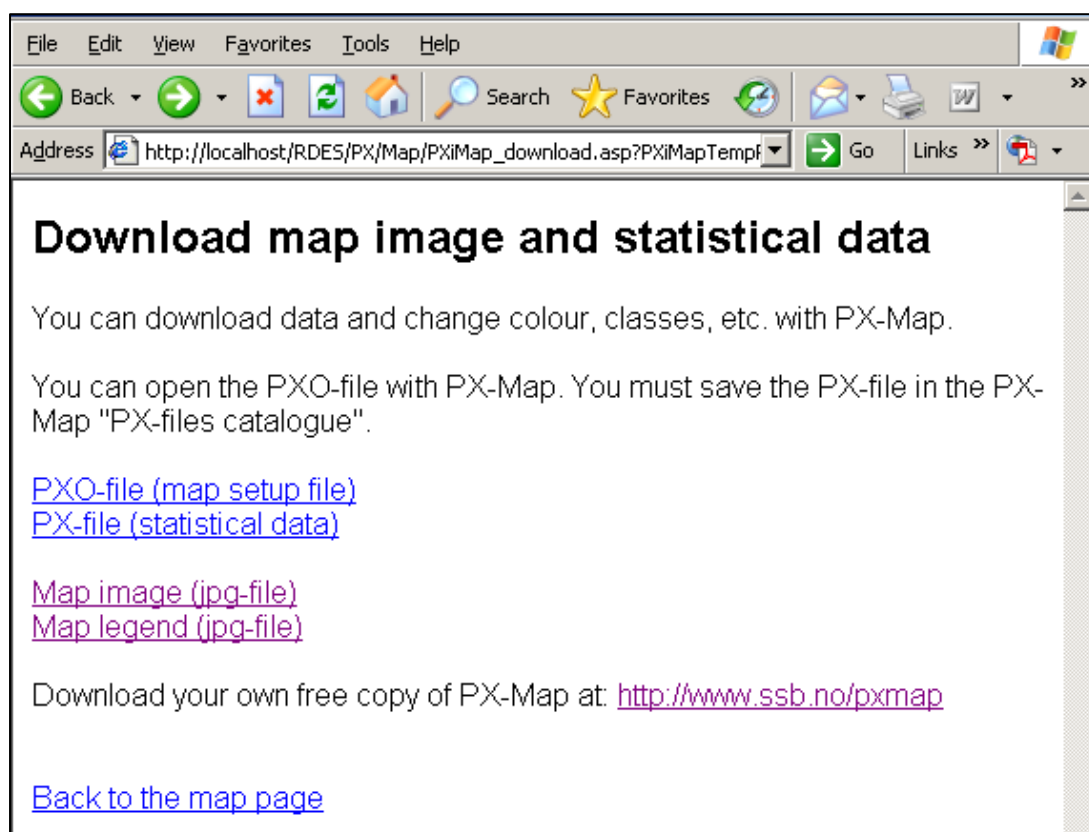




Figure 4.12 – Map image download and statistical data page

Searching keyword(s) within RDES CountrySTAT website

To search for keywords within RDES CountrySTAT website, please follow the steps below:

1. Type the keyword(s) in the search text box as show in figure 4.3. For example “rice”.
2. Click  button. You will see the search result as shown in figure 4.13 below.

You may also search a phrase, for example “Rice in Philippines” or “PaddyFields - Japan”.



The screenshot shows the RDES CountrySTAT website interface. At the top, there is a header with the text "Regional Data Exchange System (RDES) with CountrySTAT - Asia and the Pacific GCP/RAS/184/JPN of the FAO Project (Beta version)". The FAO logo is on the right. Below the header is a navigation menu with links: Home, About, Summaries, Graphs, Maps, Bulk download, Guide, Toolbar, and RDES in a nutshell. A search box contains the text "search_your_term" and a search button. On the left side, there is a "Navigation" section with a tree view showing "FAO" > "Country Data" > "Selected Indicator in APCAS" > "All data". Below that is a "Links" section with "RDES Links" and "CountrySTAT links". The main content area is titled "Search Result for 'RICE'" and displays a list of 24 search results, each with a number and a description of the data item.

Search Result for 'RICE'

1. B01 Paddy Rice (Bangladesh)
2. B01 Rice Paddy Production (Asia and the Pacific)
3. B01 Rice Paddy (Bhutan)
4. B01 Rice Paddy Area, Yield and Production in Japan
5. B01 Rice Paddy Area, Yield and Production (Vietnam)
6. B01 Paddy Rice (Bangladesh)
7. B01 Rice Paddy (Bhutan)
8. B01 Rice Paddy (Cambodia)
9. B01 Production, Yield and Area of Paddy Rice in Indonesia
10. B01 Harvested Area, Production and Yield of Rice in India
11. N01 First Advance Estimates of Foodgrains Production for 2005-2006 of India
12. B01 Rice Paddy (Iran)
13. B01-2 RicePaddy - PaddyFields - Japan
14. B01-3 Rice Paddy Upland - Japan
15. B01 Rice Paddy Area, Yield and Production in Japan
16. B01 Rice Paddy (Cambodia)
17. B01 Harvested Area, Production and Yield of Dry Season Rice in Laos
18. B01 Harvested Area, Production and Yield of Lowland Rice in Laos
19. B01 Harvested Area, Production and Yield of Total Rice in Laos
20. B01 Harvested Area, Production and Yield of Upland Rice in Laos
21. B01 Paddy Rice Production, Area Harvested and Yield in Nepal
22. O03 Rice Import & Export Volume (Selected indicator)
23. B01 Harvested Area, Production and Yield of Rice (All Type) - Philippines
24. B01 Production, Harvested Area of Paddy Rice in Philippines

Figure 4.13 – Search result page

Bulk Download

In this page, you can directly download country data in Excel and PX format. Also available for download are compressed file of all countries data and selected indicator in .px format.

1. To view the Bulk Download Page, click “Bulk Download” link on the Top Bar Menu. You will see the Bulk Download page as shown in figure 4.14.

Country	Excel Format	PX Format
Australia	australia_xls.zip (32KB)	australia_px.zip (69KB)
Bangladesh	bangladesh_xls.zip (60KB)	bangladesh_px.zip (13KB)
Bhutan	bhutan_xls.zip (77KB)	bhutan_px.zip (15KB)
Cambodia	cambodia_xls.zip (156KB)	cambodia_px.zip (27KB)
India	india_xls.zip (331KB)	india_px.zip (41KB)
Indonesia	indonesia_xls.zip (100KB)	indonesia_px.zip (18KB)
Iran	iran_xls.zip (111KB)	iran_px.zip (36KB)
Japan	japan_xls.zip (218KB)	japan_px.zip (92KB)
Laos	laos_xls.zip (232KB)	laos_px.zip (39KB)
Myanmar	myanmar_xls.zip (75KB)	myanmar_px.zip (9KB)
Nepal	nepal_xls.zip (140KB)	nepal_px.zip (45KB)
Pakistan	pakistan_xls.zip (160KB)	pakistan_px.zip (27KB)
Philippines	philippines_xls.zip (225KB)	philippines_px.zip (74KB)

Figure 4.14 – Bulk Download page

2. By clicking on the Link, a popup window, such as the one shown in figure 4.15 below, would appear. (In some versions of Internet Explorer or in browsers other than Internet Explorer, the result may be different, i.e. the link may automatically download or view the data file.) The popup window allows the user to either download the data file to the local machine or immediately view the file on the

browser. To view the file, it is necessary to have the corresponding software. In this case, winzip is required to open the file. You may download winzip program from this website:

<http://www.winzip.com/>

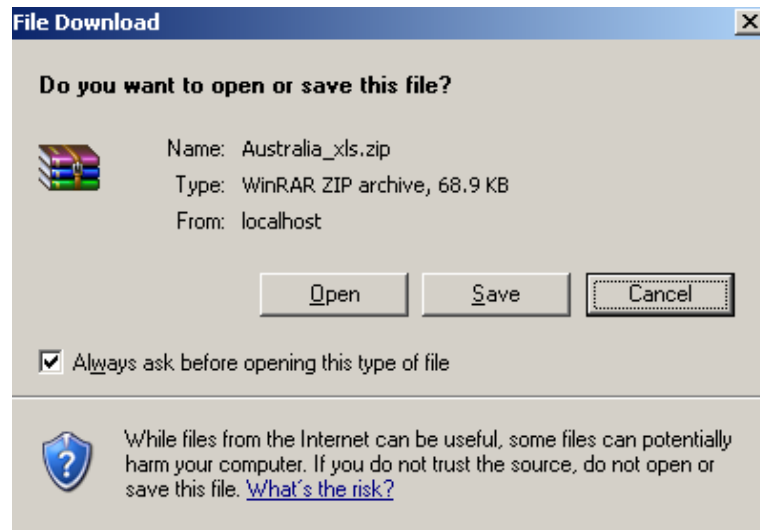


Figure 4.15 – File download pop-up window

Selected Indicator in APCAS

Selected indicator in APCAS is also provided in RDES CountrySTAT such as Agricultural Land 1993 & 2002 (Asia and the Pacific), Total & Agricultural Population (Asia and the Pacific), Maize Production (Asia and the Pacific) and others. You can also make search query on the different categories depending on what data you are searching. For example, for the “Land Use 2002 (Asia and the Pacific)”, three categories are available: **Nations**, **Land Use Area** and **Land Use Ratio (%)**. See Figure 4.16 below.

Table: A018A02Land Use 2002 (Asia and the Pacific) Unit: [1000ha][%] Metadata: About Footnotes How to select		
Nations <input checked="" type="checkbox"/> <input type="checkbox"/>	Land Use Area <input checked="" type="checkbox"/> <input type="checkbox"/>	Land Use ratio (%) <input checked="" type="checkbox"/> <input type="checkbox"/>
Total: 47. Selected: 0	Total: 2. Selected: 0	Total: 5. Selected: 0
<ul style="list-style-type: none"> Afghanistan Australia Bangladesh Bhutan Cambodia China Cook Islands** 	<ul style="list-style-type: none"> Land Use Land Use Distribution (in %) 	<ul style="list-style-type: none"> Total Land Area Arable and Permanent Crops Permanent Pasture Forests and Woodland Other Land
Search <input type="text"/> <input checked="" type="checkbox"/> Text start	Search <input type="text"/> <input checked="" type="checkbox"/> Text start	Search <input type="text"/> <input checked="" type="checkbox"/> Text start
Presentation on screen is limited to 10000 rows and 500 columns. Number of selected data rows <input type="text"/> Number of selected data columns <input type="text"/>		
Select an option and press <input type="button" value="Get Data"/>		
Table on screen, layout 1		

Figure 4.16 – Selected Indicator in APCAS search query

To make search query of Selected Indicator in APCAS:

1. Click “**Selected Indicator in APCAS**” link on the left navigation menu
2. Click one of the links, e.g. Land Use 2002 (Asia and the Pacific)
3. Select categories, e.g. under “**Nations**” select Australia, Bangladesh, Bhutan, Cambodia & China then select all for both **Land Use Area** and **Land Use Ratio** categories. See figure 4.17
4. Click “Get Data” button

See search query result on figure 4.18 below.

Table: A01&A02Land Use 2002 (Asia and the Pacific) Unit: [1000ha][%]
Metadata: About Footnotes How to select

Nations <input checked="" type="checkbox"/> <input type="checkbox"/>	Land Use Area <input checked="" type="checkbox"/> <input type="checkbox"/>	Land Use ratio (%) <input checked="" type="checkbox"/> <input type="checkbox"/>
Total: 47. Selected: <input type="text" value="5"/>	Total: 2. Selected: <input type="text" value="2"/>	Total: 5. Selected: <input type="text" value="5"/>
<input type="text" value="Afghanistan"/> <input checked="" type="checkbox"/> Australia <input checked="" type="checkbox"/> Bangladesh <input checked="" type="checkbox"/> Bhutan <input checked="" type="checkbox"/> Cambodia <input checked="" type="checkbox"/> China <input type="checkbox"/> Cook Islands ^{ak}	<input type="text" value="Land Use"/> <input checked="" type="checkbox"/> Land Use Distribution (in %)	<input type="text" value="Total Land Area"/> <input checked="" type="checkbox"/> Arable and Permanent Crops <input checked="" type="checkbox"/> Permanent Pasture <input checked="" type="checkbox"/> Forests and Woodland <input type="checkbox"/> Other Land
Search <input type="text"/> <input type="button" value=">"/> <input checked="" type="checkbox"/> Text start	Search <input type="text"/> <input type="button" value=">"/> <input checked="" type="checkbox"/> Text start	Search <input type="text"/> <input type="button" value=">"/> <input checked="" type="checkbox"/> Text start

Presentation on screen is limited to 10000 rows and 500 columns.
 Number of selected data rows Number of selected data columns

Select an option and press

Table on screen, layout 1

Figure 4.17 – Selected Indicator of APCAS sample search query

Home About RDES CountrySTAT Bulk download Guide Toolbar RDES in a nuts

▶ Table - Select part

Edit and calculate Save As Graphs and Maps

A01&A02Land Use 2002 (Asia and the Pacific) by Nations, Land Use Area and Land Use ratio (%)

	Land Use					Land Use Distribution (in %)				
	Total Land Area	Arable and Permanent Crops Land	Permanent Pasture	Forests and Woodland	Other Land	Total Land Area	Arable and Permanent Crops Land	Permanent Pasture	Forests and Woodland	Other Land
Australia	768 230.00	48 600.00	398 400.00	154 539.00	166 691.00	100.00	6.33	51.86	20.12	21.70
Bangladesh	13 017.00	8 429.00	600.00	1 334.00	2 654.00	100.00	64.75	4.61	10.25	20.39
Bhutan	4 700.00	165.00	415.00	3 016.00	1 104.00	100.00	3.51	8.83	64.17	23.49
Cambodia	17 652.00	3 807.00	1 500.00	9 335.00	3 010.00	100.00	21.57	8.50	52.88	17.05
China	932 742.00	153 956.00	400 001.00	163 480.00	215 305.00	100.00	16.51	42.88	17.53	23.08


Feedback


By accessing and using this website you agree that you have read, understood, and consent to the terms and conditions for the use of this website, as set out in the [Legal Notice](#) and [Privacy Policy](#).

© 2005 FAO. All rights reserved.

Figure 4.18 – Sample search query result

V. Quick guide

1. To search keywords within RDES CountrySTAT website:
 - a. Type the keyword or phrase located the upper left of the homepage then click  button.

2. To view country statistical data:
 - a. Click the country name on the left navigation menu
 - b. Select type of data (example: rice, wheat, paddy and others)
 - c. Select values in each listbox under **Elements, Province & Year** (Note: you must select at least one value in each listbox)
 - d. Select the output format through dropdown menu. The output format can either be displayed on the screen or download to your computer
 - e. Click  button
 - f. If you select to download the output to your computer then a download pop-up window will appear. Save the file into your computer.
 - g. If you select to view the output on the screen (meaning you've selected either "Table on screen, layout1 or Table on screen, layout2") then the output will be displayed on the screen in tabular form. Below is the explanation of the options on the table screen.

Edit and calculate

- Display the table in new layout
- Remove lines with only zeros in the table cells
- Change order for the variables, clockwise
- Change order for the variables, anticlockwise
- Change order for the variables, in any order you select
- Sum one of the variables
- Change text/code presentation. Select if code, text or code+text is to be shown for a specific variable

Save as

- PC-Axis file

- Excel file
- Text file. You get to select line length, page length, and margin.
- Tab delimited file with heading.
- Tab delimited file without heading.
- Comma delimited file with heading.
- Comma delimited file without heading.
- Space delimited file with heading.
- Space delimited file without heading.
- Semi colon delimited file with heading.
- Semi colon delimited file without heading.
- dBase relational table
- dBase, for maps
- Lotus

Graphs and Maps

- Graphs
- Maps, only shown if the table has a geographical variable



Footnotes for the table



Reference, source, units, etc for the table



Detailed information for tables. The button is only visible when such information is available.

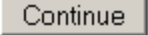


Table shown in a printer friendly version.



The page you are now reading

3. To download all country statistical data in Excel or PX file:
 - a. Click “**Bulk Download**” link on the Top Bat Menu
4. To download map files:
 - a. Click the country name on the Left Navigation Menu
 - b. Click desired links
 - c. Select values in each listbox

- d. Click  button
 - e. Click Map button
 - f. Click “Download map and statistical data” text link
 - g. Click “PXO-file (map setup file)” and “PX-file (statistical data)” text links.
5. To view the list of participating countries with country profiles:
 - a. Click “RDES in a nutshell” link on the Top Bar Menu
 6. To download the CountrySTAT toolbar for Firefox or Internet Explorer browser:
 - a. Click “Toolbar” on the Top Bar Menu.
 - b. Click “Download Toolbar” button
 7. To download CountrySTAT Guide (PowerPoint file)
 - a. Click “Guide” on the Top Bar menu
 - b. Click “Open” to open the PowerPoint file or “Save” to save the file to your computer

VI. Quick guide - CD-ROM version

A CD-Rom version of RDES CountrySTAT is also available for offline viewing. However, since it is still a Beta version, Map function is not yet working.

To open the RDES CountrySTAT using the CD-ROM:

1. Insert the RDES CountrySTAT CD-ROM in one of your computer’s CD drives. After few seconds, the CD-ROM will auto-load the virtual server in your computer. While the virtual server is loading, you will see the screen logo as shown figure 6.1 below. After the virtual server is loaded, the RDES CountrySTAT homepage will appear.
2. Please refer to **Getting Started** and **Quick guide** sections on how to use the RDES CountrySTAT in pages 6 and 19 respectively.



Figure 6.1 – DwebPro virtual server screen logo

Note: When finish using the CountrySTAT, you will not be able to eject the CD-ROM from your computer unless you unload the virtual server. To unload the virtual server, please follow the steps below.

1. Right click the virtual server icon at the bottom right of your screen. See figure 6.2 below
2. Select Close
3. Wait until the virtual server icon disappears
4. Eject the CR-ROM

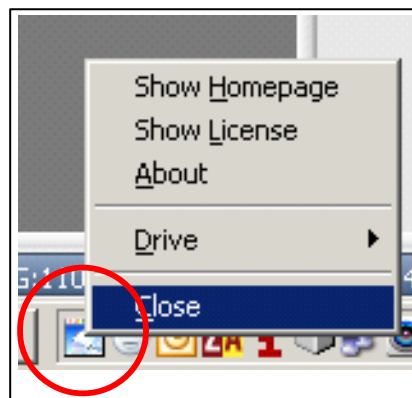


Figure 6.2 – Virtual server icon